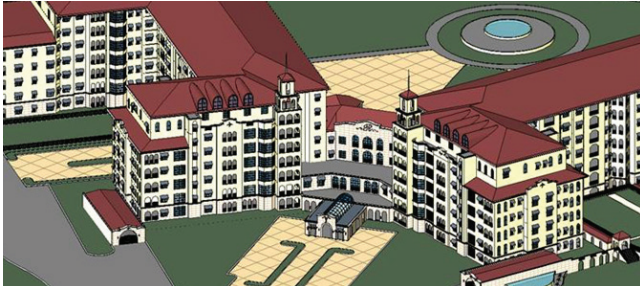


## BUILDING INFORMATION MODELING



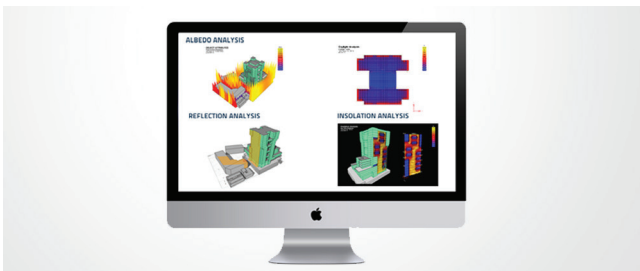
### List of Services we offer:

- Conversion of Conceptual design to 3D models
- Conversion of 2D design drawings to 3D models
- Revit BIM base Design and Drawings
- Constructability Review
- Digital Fabrication and Shop Drawings and framing documentation as per LOD 400
- Construction Working Drawing (GFC)
- Construction Analysis and Planning for site logistics
- Building Analysis & Simulation Through BIM
- Collision and clash detection
- Rebar modeling and takeoff
- 3D coordination services using Navisworks
- 3D BIM to 4D BIM for scheduling
- 5D BIM for value engineering (Estimation)
- Parametric modeling and library creation
- Creation of As-Built model
- Third Party Model Auditing
- Infrastructure design solutions
- BIM project staffing

BIM uses an integrated and information-based approach that enables better-informed decisions to be made through a distributed team of specialists and tools who effectively share information whilst eliminating data-redundancy and errors.

At Semoga, our BIM experts ensure sound design, construction and operation of conventional as well as inspired and innovative built spaces.

## ANALYSIS AND SIMULATION



At Semoga, analysis and simulation is an integral part of building services. Analysis and Simulation plays a significant role in all stages from the conceptual through construction till operations

We offer a variety of such independent as well as certification-specific analyses.

Our teams of experts bring to you the following analyses:

- Energy Analysis / Energy Simulation
- Daylight Analysis
- Visibility Analysis
- Shadow Analysis
- Fenestration Analysis
- Acoustic Analysis
- Location Analysis
- Wind Analysis
- Water Analysis

## GREEN BUILDING CERTIFICATION FACILITATION



At Semoga, green building services include thorough guidance and facilitation of green design and certification as per international and national Green Building certification schemes.

Facilitation is offered for the following certification systems –

### USGreen Building Council (USGBC)

- New Construction
- Existing Buildings
- Core & Shell
- Commercial Interiors
- Retail
- Homes
- Neighborhoods
- Schools
- Healthcare

### Qatar Sustainability Assessment System (QSAS)

- All Building Typologies
- Sports
- Neighbourhoods
- Parks

## COMPANY OVERVIEW

Semoga is an amalgamation of specialisations, people and ideas all working towards the common goal of customer satisfaction using sustainability principles as our benchmarks. What better place to test your skills and creativity and to explore the emerging world of Green Buildings...

## SUPPORTING LANDMARKS WORLDWIDE...



The Capital  
The Wadhwa Group



The Address  
The Wadhwa Group



C66  
The Wadhwa Group



Runwal Greens



Takshashila

## OVER 100 PROJECTS ACROSS THE GLOBE



Orbit  
Enclave



Orbit  
Terraces



Springmills Tower 1  
Bombay Realty



Futurex  
Marathon

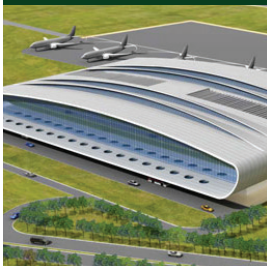


Greenwoods  
Ackruti



Solaris  
Ackruti

## OVER 3000 STORIES OF SUSTAINABLE SKYSCRAPERS



Vadodara Airport



ITT XYLEM



Pristina  
Hiranandani



Sky Suites  
Indiabulls



Bhagtani Krishaang  
JG

## ABOUT US

As a pioneer of the green building movement in the Middle East, Qatar has steadily been paving the way to transforming the country's development on the lines of sustainability....

....And SEMOGA as an organisation is a part of this transformation.

Our people and services, spanning key elements of the global green construction industry today, are directed towards the goals of the Qatar National Vision 2030 which aims for sustainable development whilst providing for a high standard of living for its people.

Semoga is created and constituted by experts and professionals with wide ranging expertise and credentials field of sustainable built environments. This includes architects, engineers, consultants with green certification experience and many more.



SEMOGA TRADING & CONTRACTING WLL .

Office No :5, First Floor, Zone-56, Street - 340

Ain-Khalid, Salwa Road, Doha, Qatar

Land Line : +974 44314779

Mobile :+974 50149907

Email Address: [contact@semogagroup.com](mailto:contact@semogagroup.com)

Our Partner



[www.surmountenergy.com](http://www.surmountenergy.com)